



## Level 63/6301/500 Elizabeth Street Melbourne VIC

2 1 1

Offering breathtaking northern views of Melbourne's CBD, this near-new, vacant 2-bedroom apartment provides an entry-level opportunity in the luxurious VISION complex.

Flooded with natural light, the living area opens to a private balcony showcasing the stunning northern vista. The sleek galley kitchen features a stone benchtop, gas cooktop, dishwasher, and ample storage space. The main bedroom includes built-in robes and plenty of natural light, while the second bedroom serves perfectly as a guest room or home office.

The stylish, fully tiled bathroom comes with a mirrored vanity for added storage, and additional conveniences include a Euro-laundry, split-system heating and cooling,

**Type** : Apartment

**Price** : \$520,000 - \$560,000

**View** : <https://www.bradyresidential.com.au/sale/vic/inne-r-city/melbourne/residential/apartment/8188399>

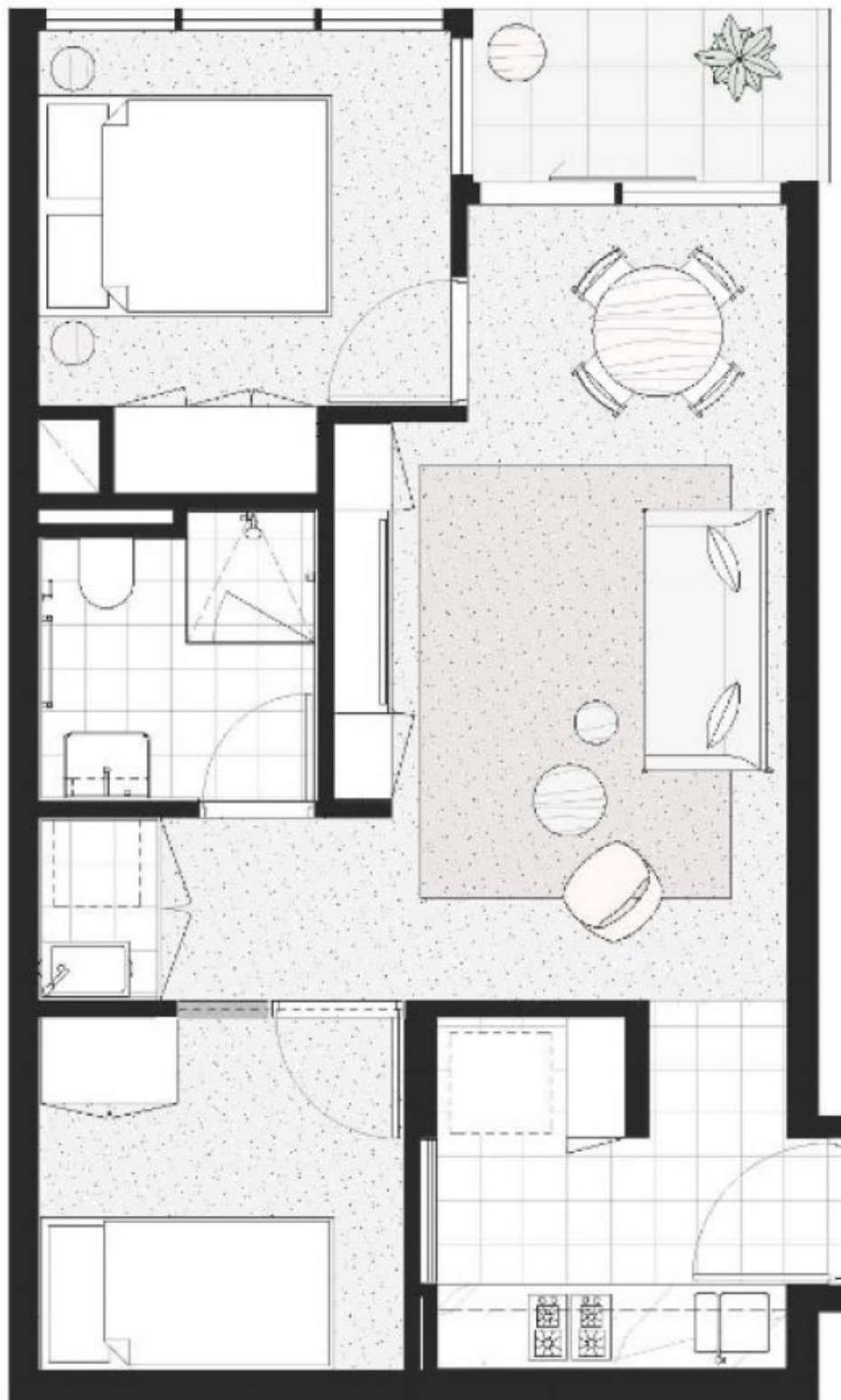


**Jared Jin (é±æ±æ±)**  
9603 1400



**Tom Prior**  
9603 1400

[For full version visit the website](https://www.bradyresidential.com.au)



**BRADY**

The information shown is for marketing purposes only and is subject to variation as permitted in the contract of sale. Areas have been calculated in accordance with the Property Council of Australia's method of measurements for residential property.