



## 907/5 Sutherland Street Melbourne VIC

1 1

This lovely furnished one-bedroom apartment at Melbourne Sky building offers a desirable choice of living and is conveniently located close to Melbourne Central, public transport, restaurants, cafes and other amenities.

**Type** : Apartment

**Price** : \$535 per week

**View** : <https://www.bradypressidential.com.au/lease/vic/inner-city/melbourne/residential/apartment/8184447>

### Apartment features;

- Kitchen with stone benchtop, Miele cooking appliances and pantry
- Open plan living with balcony access
- Split system heating/cooling in living room & bedroom
- GAS included
- Bathroom with quality finishes and fittings
- Furnished

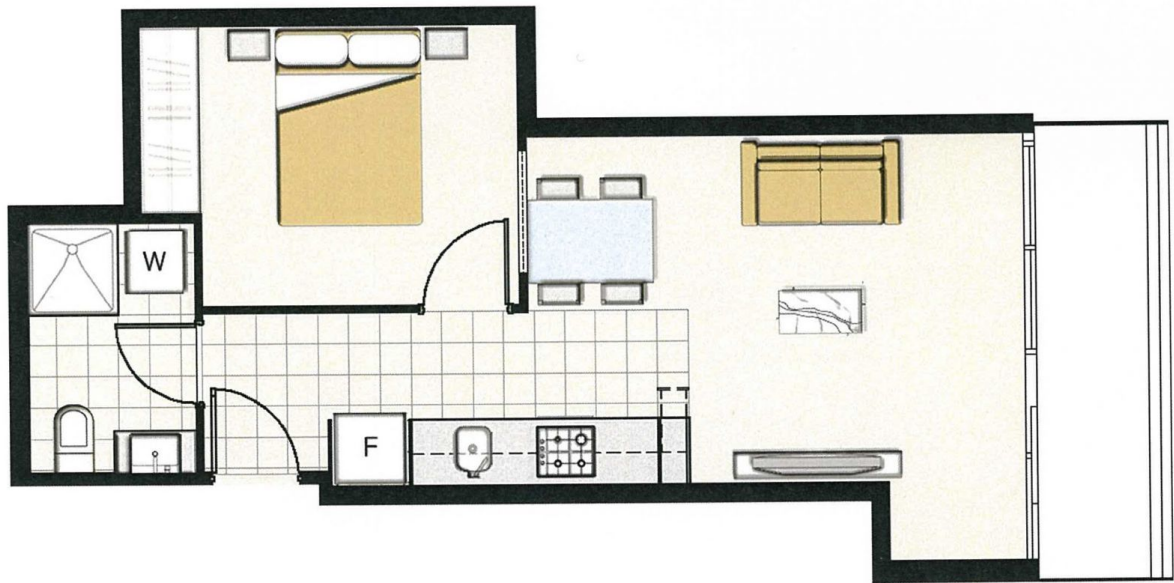


**Bao Phan**  
9603 1400



**Stella Grivas**  
9603 1400

[For full version visit the website](https://www.bradypressidential.com.au)



0 0.5M 1M 2M