



1905/8 Exploration Lane Melbourne VIC

2 1

Discover the essence of sophisticated urban living in this superb corner apartment, perfectly positioned in Melbourne's exclusive Paris End. Nestled in a peaceful laneway, this residence grants effortless access to the city's best attractions - steps from QV, RMIT, Melbourne Central, the State Library, Chinatown, and a wealth of retail shops and cafes. For a breath of fresh air, Carlton Gardens are a mere 5-minute stroll away.

Located on the 19th floor of the sought-after Eastend Building, this spacious apartment combines contemporary style with exceptional convenience. The sleek kitchen boasts stainless steel appliances, gas cooktop, elegant stone benchtops, and ample cabinetry.

Type : Apartment
Price : \$415,000
View : <https://www.bradyresidential.com.au/sale/vic/inne-r-city/melbourne/residential/apartment/8173122>

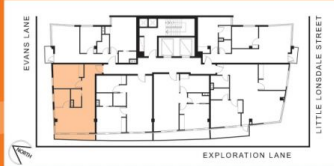


Tom Prior
9603 1400

[For full version visit the website](https://www.bradyresidential.com.au)



05
LEVEL 16-27



DISCLAIMER : Whilst all care is taken to ensure accuracy in the preparation of this document, no warranty is given and interested parties should rely on the contract of sale. Total area includes balcony. All photographs and artist's impressions are indicative only and are not intended to be a true representation.

