

1711/8 Downie Street Melbourne VIC

1 1

Experience the ultimate in modern city living with this ultra-stylish one-bedroom apartment, ideally located on Downie Street, nestled between Flinders Lane and Flinders Street. This elegant residence captures the essence of a sought-after CBD lifestyle, offering stunning views towards Southbank and a serene urban escape.

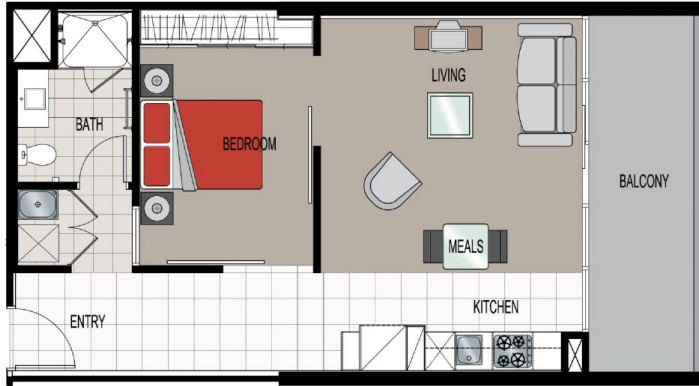
The free-flowing floor plan features a bright and airy living area highlighted by expansive floor-to-ceiling windows, creating a seamless connection to the outside world. With stylish floorboards and tiling throughout the apartment, enhancing its modern aesthetic. The contemporary kitchen showcases sleek design elements and is equipped with stainless-steel appliances, including a 4-burner gas cooktop and a full-sized dishwasher.

[For full version visit the website](https://www.bradypressidential.com.au/sale/vic/inner-city/melbourne/residential/apartment/8155809)

Type : Apartment
Price : \$370,000 - \$400,000
Building Size : 61.8 sqm
View : <https://www.bradypressidential.com.au/sale/vic/inner-city/melbourne/residential/apartment/8155809>



Tom Prior
9603 1400



NOT TO SCALE

**DOWNE STREET
APARTMENTS**

- D13.09 D16.11
- D14.09 D17.11
- D15.09 D18.11
- D19.11
- D20.11



APARTMENT TOWERS
550 FLINDERS STREET, MELBOURNE

Apartment Description			
Total		Balcony	
sqm.	sqft.	sqm.	sqft.
61.8	665	10.3	111



APARTMENT TYPE 'G' LOCATION

BRADY

DESIGN ■ DEVELOPMENT ■ CONSTRUCTION



REVISION: 201504

396 Latrobe Street
Melbourne Australia 3000

Telephone: (03) 9329 3659 Facsimile: (03) 9329 3677
e-mail: marian@bradygroup.com.au