



4505/371 Little Lonsdale Street Melbourne VIC

1  1 

The unique interior and finish of this residential apartment with its clean lines, flowing spaces and sophisticated palette, has been inspired by the architecture of Elenberg Fraser. 380 Melbourne elevates style, amenity and convenience to luxurious new heights. Situated in the retail heart of the CBD, with some of Melbourne's finest restaurants & cafes at your doorstep with easy access to universities.

Apartment Features:

- Stylish and sleek kitchen with Miele Appliances
- Spacious living dining area
- One bedroom with built in robes
- Modern bathrooms with a high-end finish
- European laundry

Type : Apartment

Price : \$650 per week

View : <https://www.bradyresidential.com.au/lease/vic/inner-city/melbourne/residential/apartment/8154601>



Emma Luo
03 9603 1400

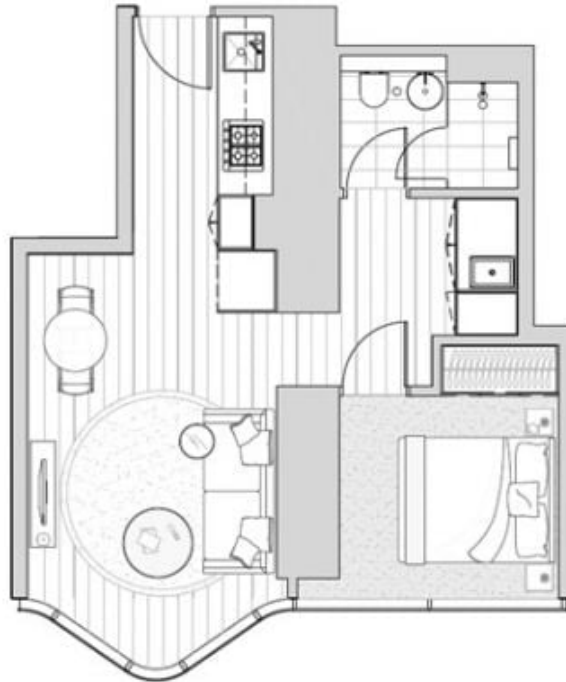
[For full version visit the website](https://www.bradyresidential.com.au)



APARTMENT: 4505

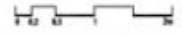
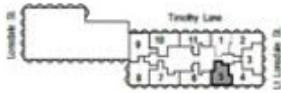
1 Bedroom & 1 Bathroom
Apartment Type A1.2*

AREA: 44.9 m²



Bay 1 (7)

Bay 1 (1)



INDIVIDUAL APARTMENT PLAN

Plans are indicative and may be varied in accordance with Contract of Sale. Furniture depicted is not included. Refer to the Contract of Sale for included fixtures & fittings. Areas are calculated using the Property Council of Australia's Method of Measurement for Residential Property.

Revision: A Updated: 03/03/17

