



1910/371 Little Lonsdale Street Melbourne VIC

2  **2** 

380 Melbourne elevates style, amenity and convenience to luxurious new heights. The unique interior and finish of this residential apartment with its clean lines, flowing spaces and sophisticated palette, has been inspired by the architecture of Elenberg Fraser. Situated in the retail heart of the CBD, with some of Melbourne's finest restaurants & cafes at your doorstep with easy access to universities

Type : Apartment

Price : \$830 per week

View : <https://www.bradyresidential.com.au/lease/vic/inner-city/melbourne/residential/apartment/8152724>

Apartment and building features:

- Stylish and sleek kitchen with Miele Appliances
- Spacious living dining area
- Two bedrooms with built in robes
- Two modern bathrooms with high-end finishes
- European laundry
- Heating and cooling (living area)



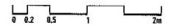
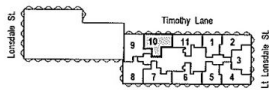
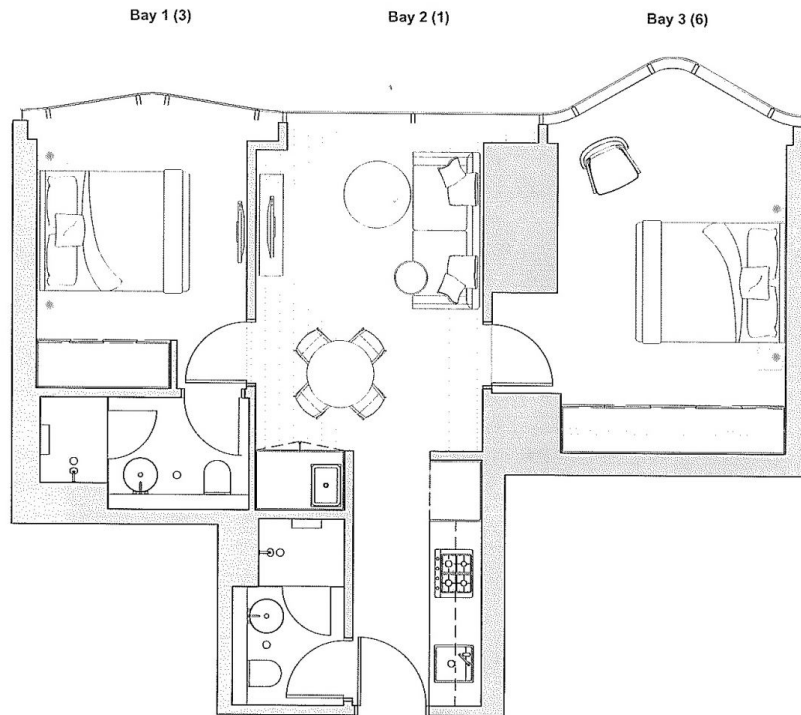
Emma Luo
03 9603 1400

[For full version visit the website](https://www.bradyresidential.com.au)

APARTMENT: 1910

2 Bedroom & 2 Bathroom
Apartment Type C10

AREA: 62.7 m²



INDIVIDUAL APARTMENT PLAN

[illegible]

Revision 4 Updated: 02/01/2017

BRADY