

## 2009/8 Sutherland Street Melbourne VIC

2 2

Experience the ideal mix of convenience and comfort in this beautifully updated 2-bedroom, 2-bathroom apartment, perfectly located in the vibrant heart of Melbourne's Central Business District. This residence serves as a serene sanctuary while offering effortless access to the city's dynamic offerings.

Meticulously maintained and move-in ready, the apartment features brand new flooring and breathtaking panoramic views of the city from its bright and airy living areas. The spacious living room seamlessly connects to a functional balcony through sliding doors, maximizing both space and natural light.

Both bedrooms are stylishly designed with built-in

[For full version visit the website](https://www.bradypressidential.com.au/sale/vic/inner-city/melbourne/residential/apartment/8135130)

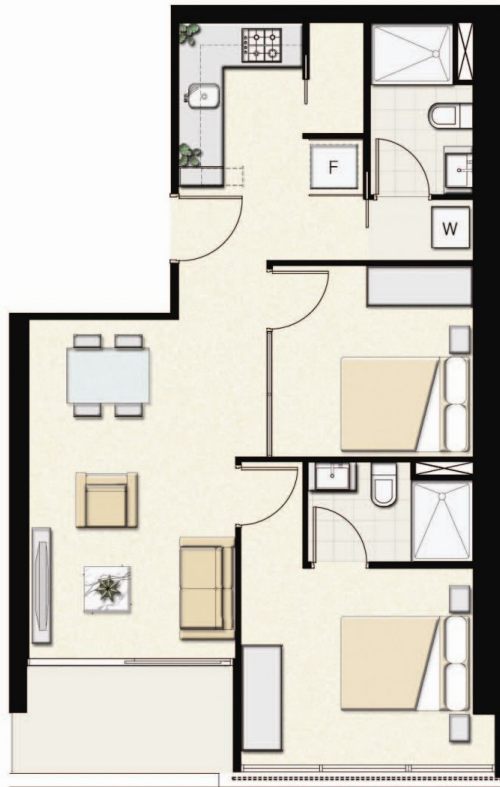
<b>Type</b>	: Apartment
<b>Price</b>	: \$460,000 - \$500,000
<b>Building Size</b>	: 69.5 sqm
<b>View</b>	: <a href="https://www.bradypressidential.com.au/sale/vic/inner-city/melbourne/residential/apartment/8135130">https://www.bradypressidential.com.au/sale/vic/inner-city/melbourne/residential/apartment/8135130</a>



**Tom Prior**  
9603 1400

# MELBOURNE STAR

2 BEDROOMS



UNIT 09

BALCONY : 5.5 m<sup>2</sup>  
TOTAL AREA: 69.5 m<sup>2</sup>

APT : 1109, 1209,  
1309, 1409, 1509,  
1609, 1709, 1809,  
1909, 2009, 2109,  
2209, 2309, 2409,  
2509, 2609, 2709,  
2809, 2909 &  
3009



**BRADY**  
PROPERTY GROUP