



503/8 Exploration Lane Melbourne VIC

2 2

Embrace the ultimate in city living with this exquisite apartment, perfectly situated in Melbourne's coveted Paris End. Nestled in a serene laneway, this residence offers unrivaled convenience with Melbourne Central, QV, RMIT, the State Library, and vibrant Chinatown all just a short stroll away. For moments of relaxation, the lush Carlton Gardens are a mere 5-minute walk from your doorstep.

Positioned on the 5th floor of the prestigious Eastend Building, this expansive apartment seamlessly combines modern sophistication with unparalleled accessibility. The chef's kitchen is a standout feature, boasting high-end stainless steel appliances, sleek gas cooktops, elegant stone benchtops, and ample storage space.

Type : Apartment
Price : \$420,000 - \$460,000
View : <https://www.bradyresidential.com.au/sale/vic/inne-r-city/melbourne/residential/apartment/8116694>



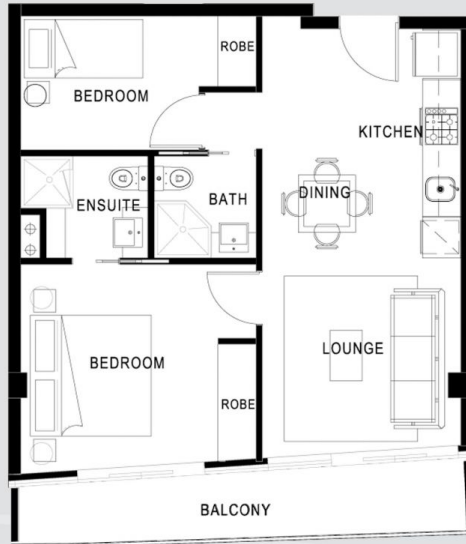
Tom Prior
9603 1400



Rex Nuredini
9603 1400

[For full version visit the website](https://www.bradyresidential.com.au)

EastEnd
apartments



03

LEVEL 5-27



DISCLAIMER : Whilst all care is taken to ensure accuracy in the preparation of this document, no warranty is given and interested parties should rely on the contract of sale. Total area includes balcony. All photographs and artist's impressions are indicative only and are not intended to be a true representation.

BRADY
PROPERTY GROUP
www.8eastend.com.au