

1601/8 Exploration Lane Melbourne VIC

2 2

Elevate your urban lifestyle with this exceptional 16th-floor apartment, located in the prestigious Paris End of Melbourne. Nestled in a quiet laneway, this residence offers effortless access to the city's vibrant attractions, including QV, RMIT, Melbourne Central, the State Library, Chinatown, and a host of retail shops and cafes—all just a short, leisurely walk away. For moments of tranquility, the serene Carlton Gardens are only a 5-minute stroll from your door.

Positioned on the 16th floor of the esteemed Eastend Building, this spacious apartment harmoniously blends contemporary design with unmatched convenience. The modern kitchen is a standout feature, showcasing top-tier stainless steel appliances, gas cooktops, elegant stone

Type : Apartment

Price : \$460,000 - \$480,000

View : <https://www.bradyresidential.com.au/sale/vic/inner-city/melbourne/residential/apartment/8116625>

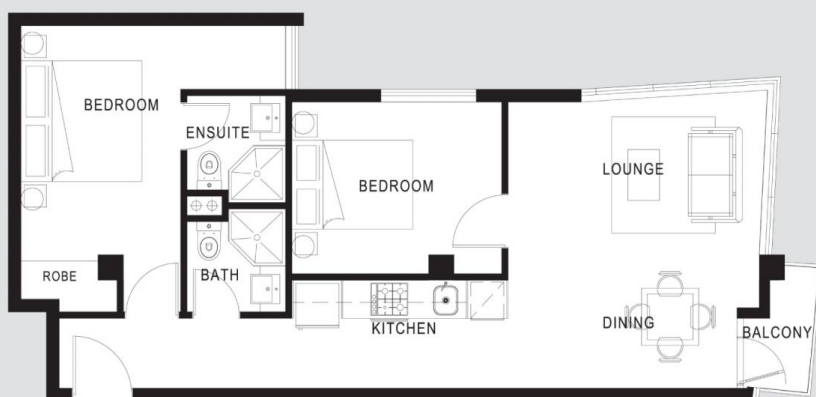


Tom Prior
9603 1400



Rex Nuredini
9603 1400

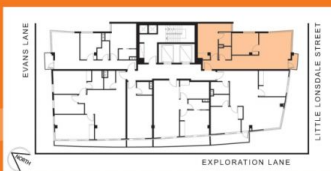
[For full version visit the website](https://www.bradyresidential.com.au)



0 0.5 1 2 3 4 5
metres

01

LEVEL 5-27



DISCLAIMER : Whilst all care is taken to ensure accuracy in the preparation of this document, no warranty is given and interested parties should rely on the contract of sale. Total area includes balcony. All photographs and artist's impressions are indicative only and are not intended to be a true representation.

BRADY
PROPERTY GROUP

www.8eastend.com.au