



## 2203/5 Sutherland Street Melbourne VIC

2 2

This lovely two-bedroom apartment at Melbourne Sky building offers a convenient and desired choice of living. Ideally situated close to a number amenities including public transport, shops, restaurants and cafes.

**Type** : Apartment

**Price** : \$650 per week

**View** : <https://www.bradyresidential.com.au/lease/vic/inner-city/melbourne/residential/apartment/8103990>

### Apartment features:

- Kitchen with stone benchtop, cooking appliances and pantry
- Open plan living with balcony access
- Split system heating/cooling in living
- Double glazed and tinted windows
- Bathroom with quality finishes and fittings

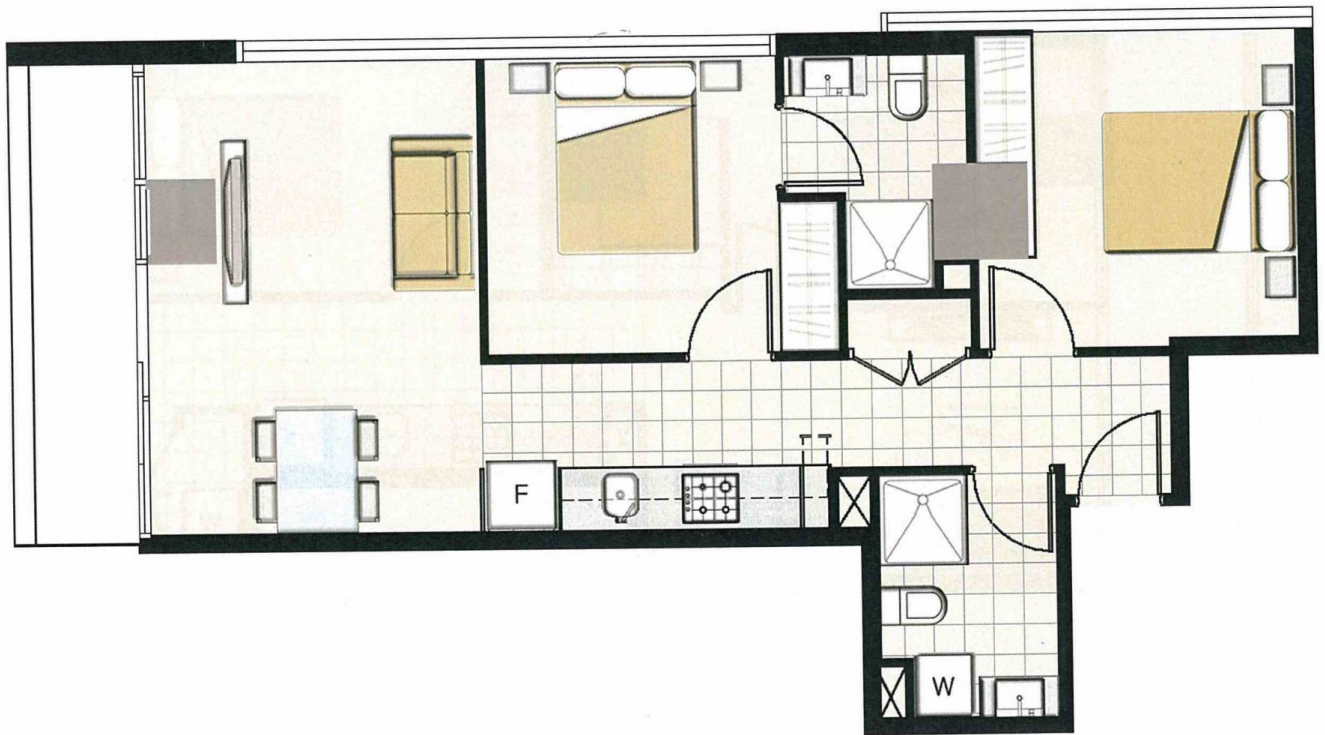
### Resident amenities:

- Secure entry and onsite building manager

[For full version visit the website](https://www.bradyresidential.com.au)



**Bao Phan**  
9603 1400



0 0.5M 1M 2M