

**4006/371 Little Lonsdale Street Melbourne VIC**

**2** **2**

The unique interior and finish of this residential apartment with its clean lines, flowing spaces and sophisticated palette, has been inspired by the architecture of Elenberg Fraser. 380 Melbourne elevates style, amenity and convenience to luxurious new heights. Situated in the retail heart of the CBD, with some of Melbourne's finest restaurants & cafes at your doorstep, with easy access to universities and public transport.

Apartment features:

- Stylish and sleek kitchen with Miele Appliances
- Spacious living dining area
- Two bedrooms with built in robes
- Modern bathrooms with high-end finishes
- European laundry

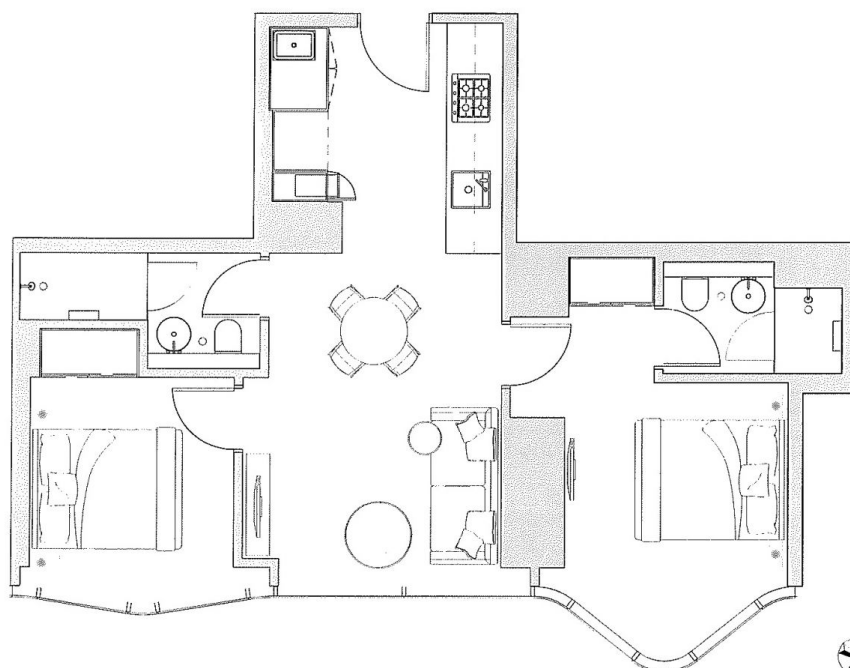
**Type** : Apartment

**View** : <https://www.bradyresidential.com.au/lease/vic/inner-city/melbourne/residential/apartment/8097966>



**Emma Luo**  
**03 9603 1400**

[For full version visit the website](https://www.bradyresidential.com.au)



Bay 1 (3)

Bay 2 (1)

**Bay 3 (8)**



### INDIVIDUAL APARTMENT PLAN

There are no known and reported cases of this virus amongst the Spitz Mountain population and related species. The Center for Disease Control has found 2 groups with the

Revision A Updated 03/01/2017

**BRADY**