

3307/28 Timothy Lane Melbourne VIC

1 1

The unique interior and finish of this residential apartment with its clean lines, flowing spaces and sophisticated palette, has been inspired by the architecture of Elenberg Fraser. 380 Melbourne elevates style, amenity and convenience to luxurious new heights. Situated in the retail heart of the CBD, with some of Melbourne's finest restaurants & cafes nearby, with easy access to universities and public transport.

Apartment Features:

- Stylish and sleek kitchen with Miele appliances
- Spacious living area
- One bedroom with built in robes
- Modern bathroom with high-end finishes
- European laundry (washer/dryer incl.)

Type : Apartment

View : <https://www.bradyresidential.com.au/lease/vic/inner-city/melbourne/residential/apartment/8092501>



Emma Luo
03 9603 1400

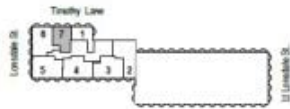
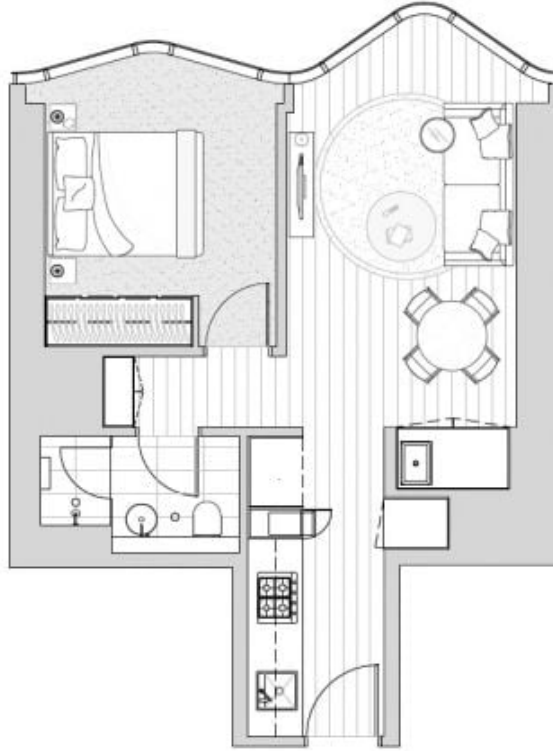
[For full version visit the website](https://www.bradyresidential.com.au)



Bay 1 (4)

Bay 2 (7)

SOUTH TOWER
APARTMENT: 3307
1 Bedroom & 1 Bathroom
Apartment Type A3
AREA: 48.8 m²



INDIVIDUAL APARTMENT PLAN

Plans are indicative and may be varied in accordance with Contract of Sale. Furniture depicted is not included. Refer to the Contract of Sale for included fixtures & fittings. Areas are calculated using the Property Council of Australia's Method of Measurement for Residential Property.

Revision: - Updated: 08/02/2018

BRADY