

6402/500 Elizabeth Street Melbourne VIC

2 1

Perfectly located within Melbourne CBD, this 64th level apartment blends city living lifestyle and leisure, close to universities, local markets, shopping centres and public transport.

**Type** : Apartment

**View** : <https://www.bradyresidential.com.au/lease/vic/inner-city/melbourne/residential/apartment/8071983>

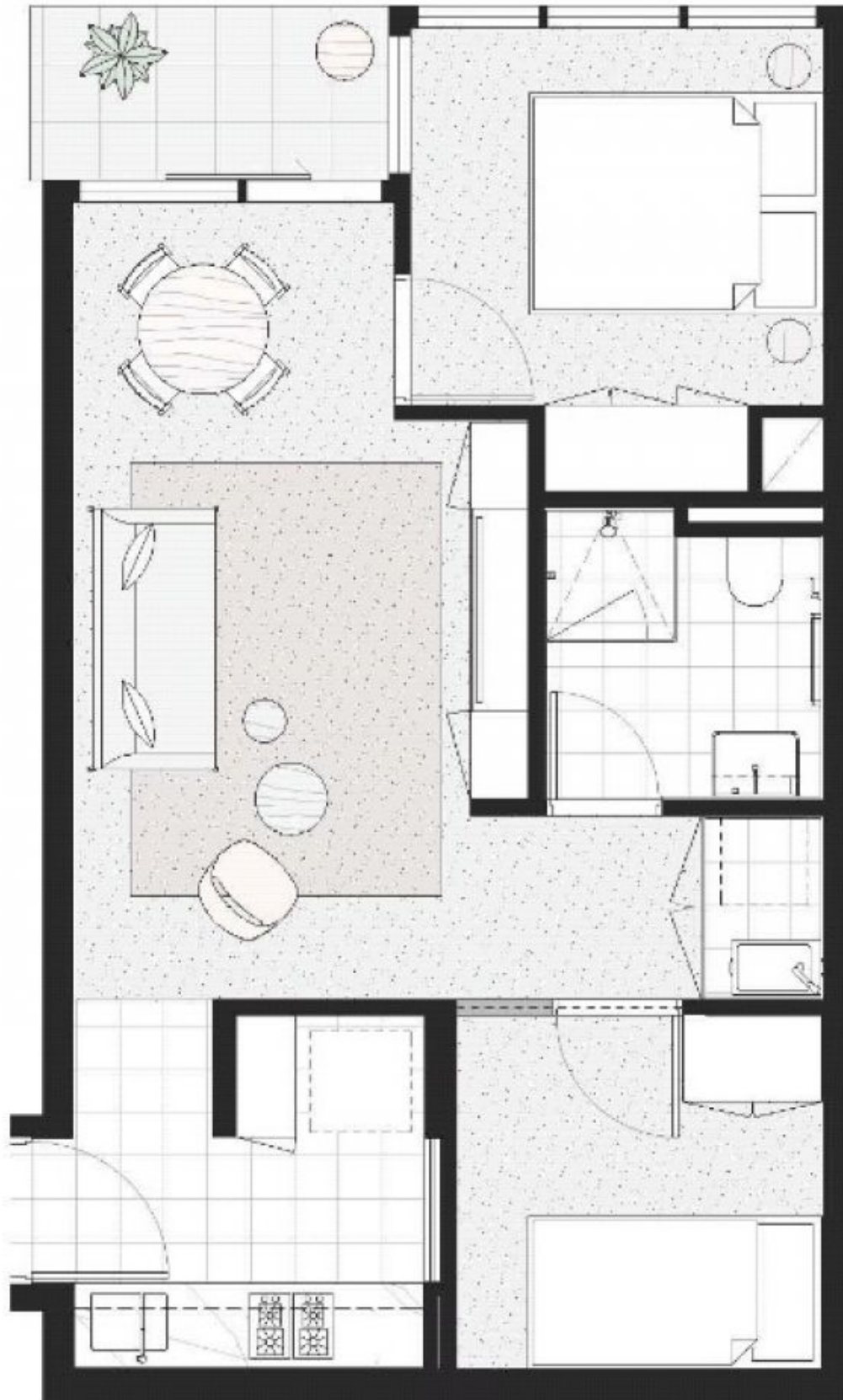
Apartment features:

- Well-appointed modern kitchen with fridge & microwave included
- Caesar stone bench tops
- Breakfast bar
- Plenty of storage throughout the kitchen
- Open plan living and dining with balcony access
- Split system heating/cooling in the living area only
- Bedrooms with built in robes
- Modern bathroom



**Emma Luo**  
03 9603 1400

[For full version visit the website](https://www.bradyresidential.com.au)



**BRADY** The information shown is for marketing purposes only and is subject to variation as permitted in the contract of sale. Areas have been calculated in accordance with the Property Council of Australia's method of measurements for residential property.