



3612/500 Elizabeth Street Melbourne VIC

2  1 

A lifestyle unrivalled in sophistication, luxury, convenience and ideally situated in a coveted corner position in Melbourne's CBD which offers an amazing balance of lifestyle and leisure.

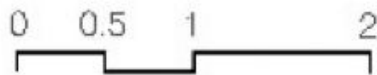
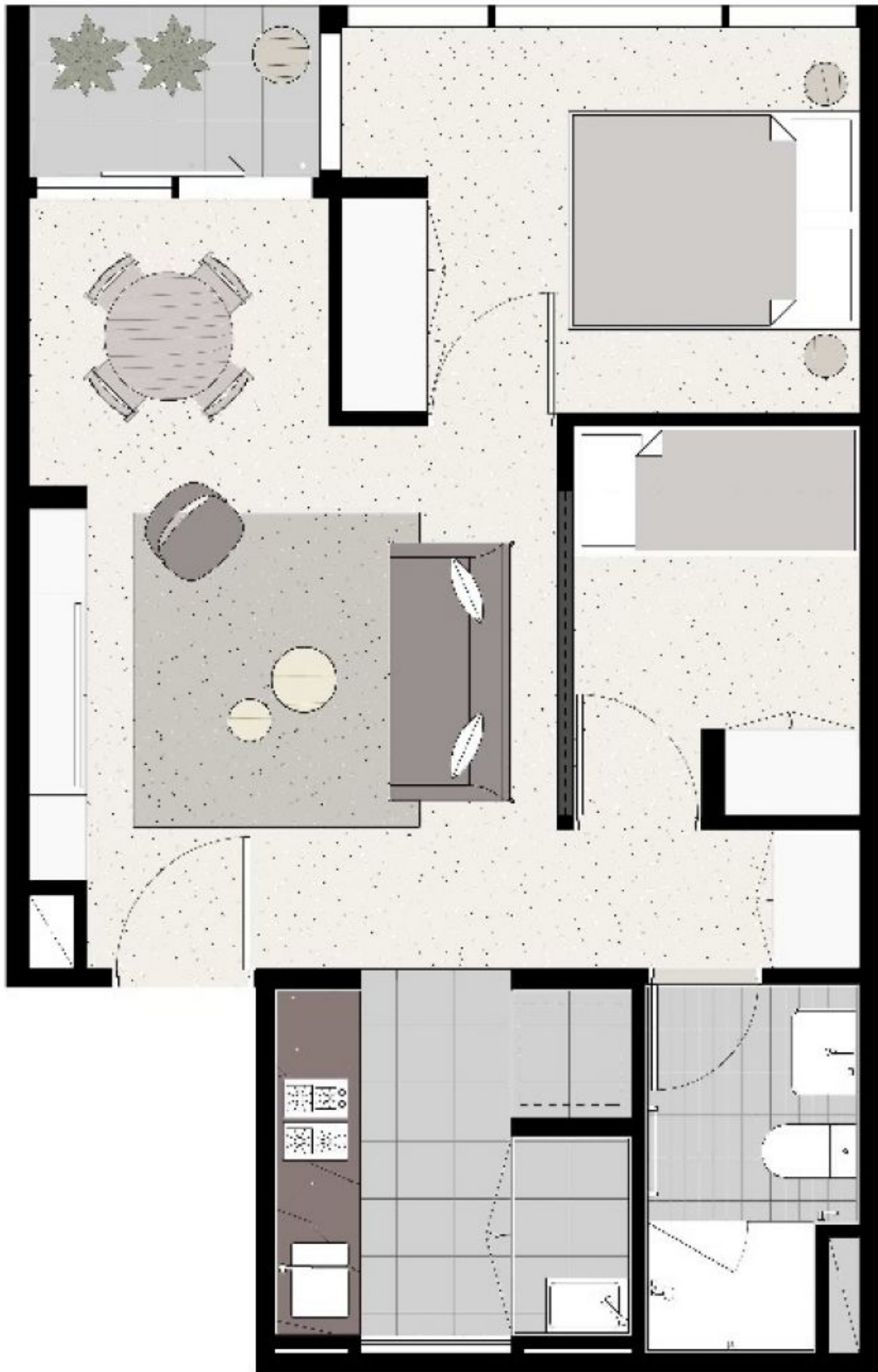
View : <https://www.bradyresidential.com.au/lease/vic/inner-city/melbourne/residential/apartment/8013671>

Apartment features;

- Amazing city views from the apartment
- Miele S/S appliances
- Caesar stone bench tops
- Split system heating/cooling
- Double glazed windows
- NBN ready
- Balcony
- Natural tones
- Sparkling bathrooms with quality finishes and fittings
- European laundry.



Tom Prior
9603 1400



BRADY

The information shown is for marketing purposes only and is subject to variation as permitted in the contract of sale.