

**507/8 Sutherland Street MELBOURNE VIC**

**3**  **2** 

The setting is ideally located in the centre of Little Lonsdale Street, right next to Melbourne Central and just a stone's throw from universities, State Library, Queen Victoria market, this apartment offers an unrivalled lifestyle that will be the envy of many.

**Type** : Apartment

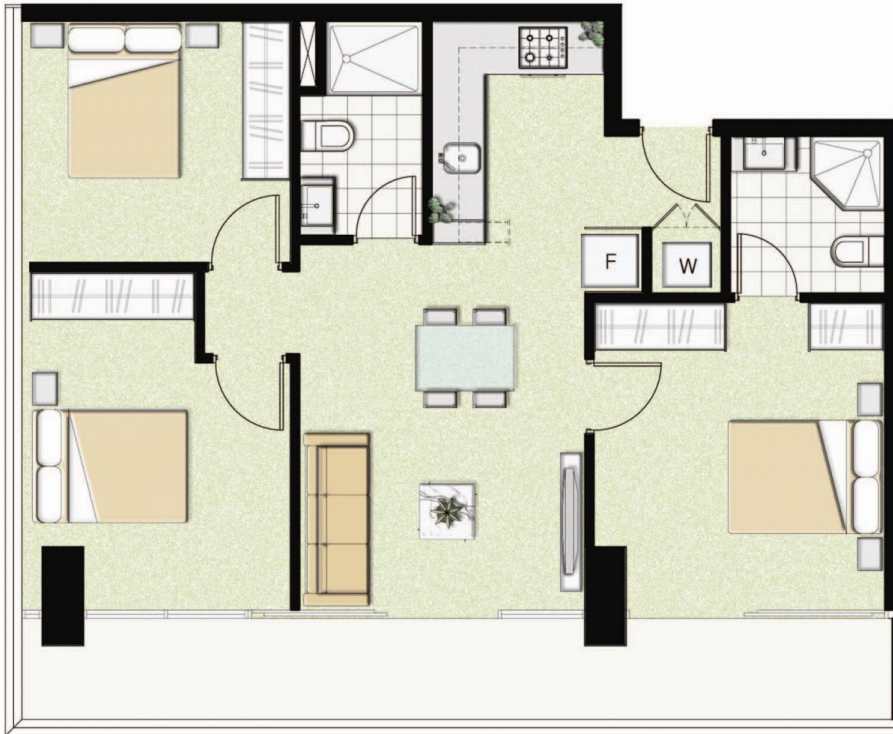
**View** : <https://www.bradyresidential.com.au/sale/vic/inner-city/melbourne/residential/apartment/7416021>

The open plan living and dining area is exceptionally planned to accommodate an expansive lounge and dining set up, perfect for entertainers with the space to furnish to your heart's desire. The full length windows flood the area with natural light and split system air conditioning & heating has also been fitted to ensure your comfort no matter the season. The large balcony is accessed via the sliding doors from the living room and all bedroom it is clear from the moment you step out that this is a truly idyllic setting.

[For full version visit the website](https://www.bradyresidential.com.au)

# MELBOURNE STAR

3 BEDROOMS



UNIT 06

BALCONY : 13.5 m<sup>2</sup>  
TOTAL AREA: 87.5 m<sup>2</sup>

APT : 507, 607, 1306,  
1406, 1506, 1606,  
1706, 1806, 1906,  
2006, 2106, 2206,  
2306, 2406, 2506,  
2606, 2706, 2806,  
2906, 3306, 3406,  
3506, 3606, 3706,  
3806, 3906 &  
4006



SUTHERLAND ST

LT LONSDALE ST

**BRADY**  
PROPERTY GROUP

