

2101/28 Wills Street MELBOURNE VIC

2 2 1

The vibrant atmosphere of this fantastic location is second to none. With Flagstaff Gardens as your backyard and Queen Victoria Market only moments away this is the only way to enjoy a metropolitan lifestyle. The amazing south facing views encompass the surrounding CBD and by night the city lights provide a show that is sure to astound.

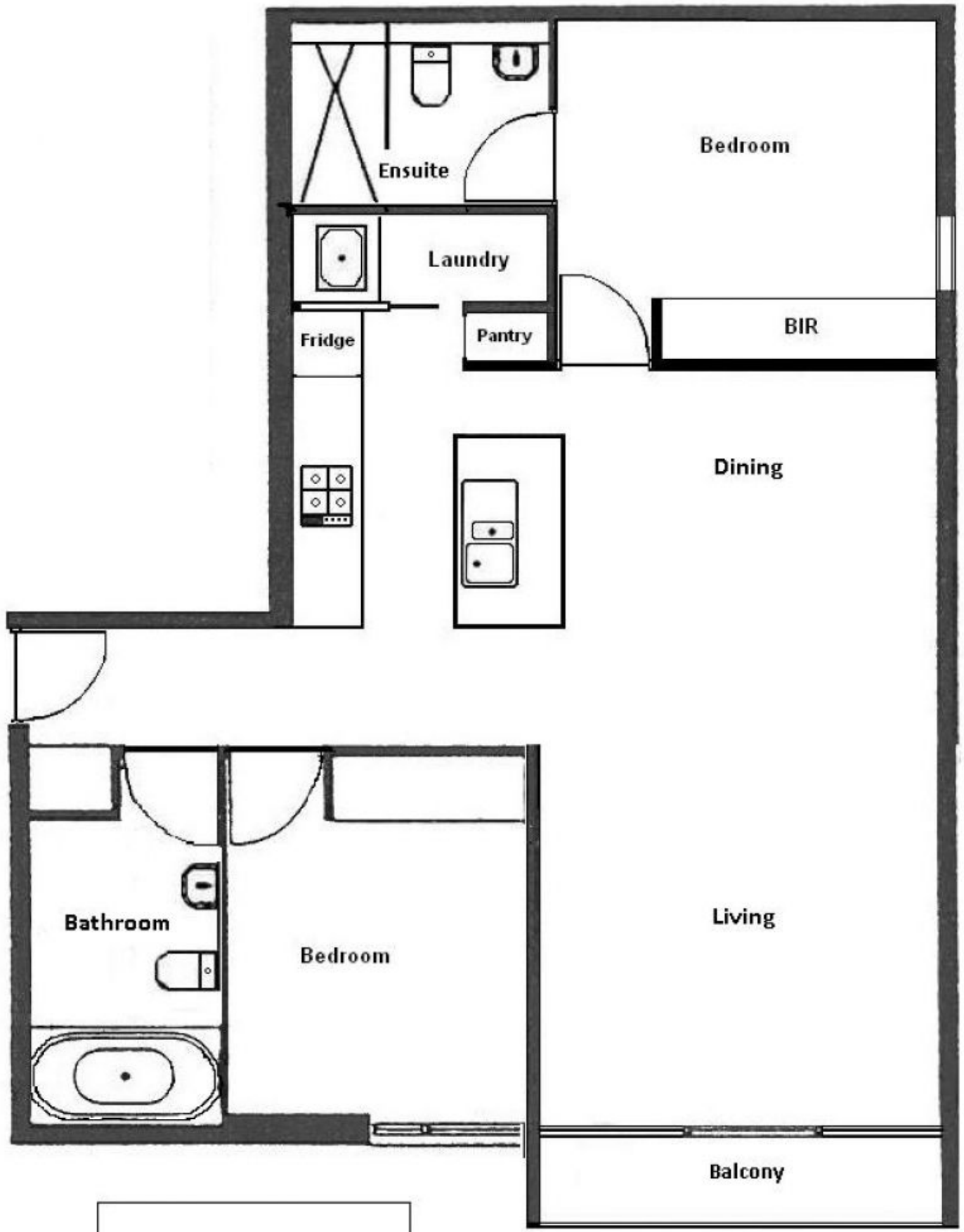
**Type** : Apartment

**View** : <https://www.bradyresidential.com.au/sale/vic/inner-city/melbourne/residential/apartment/7416002>

The open plan living and dining area is flooded with an abundance of natural light thanks to the full length windows which allow you to enjoy the breathtaking views from the comfort of your lounge. The generously sized balcony is accessed off the lounge and allows you take in views to the east and south. The sheer size of the balcony makes it ideal for an outdoor set up which the owner occupier is sure to enjoy.

[For full version visit the website](https://www.bradyresidential.com.au)

<https://www.bradyresidential.com.au>



Car Space  
Not in Position