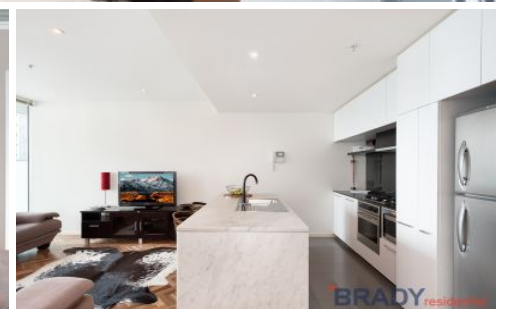
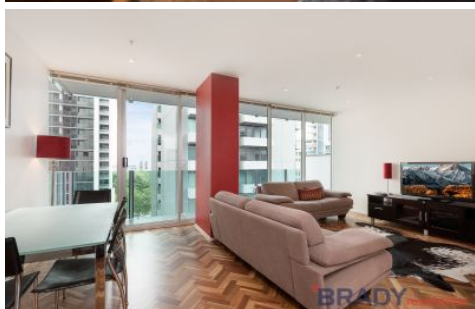


# BRADY residential



1103/28 Wills Street MELBOURNE VIC

2 1 1

This two bedroom apartment located in the leafy surrounds of Wills Street is sure to impress. In a location that is unrivalled with Flagstaff Gardens as your backyard and Melbourne Central, Queen Victoria Market & RMIT University only moments away, this is the ideal place to enjoy an inner city lifestyle.

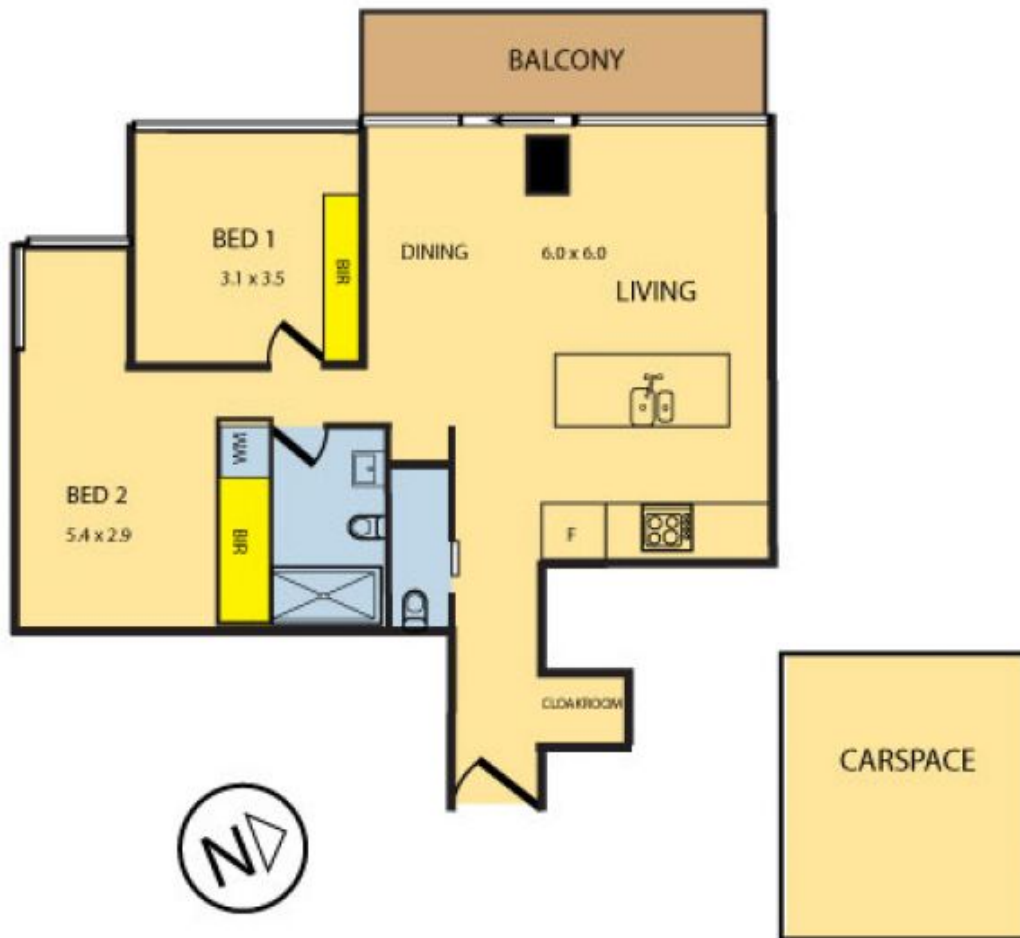
**Type** : Apartment

**View** : <https://www.bradyresidential.com.au/sale/vic/inner-city/melbourne/residential/apartment/7415997>

The open plan living and dining area is an excellent size with plenty of room for an expansive lounge set up. The full length windows provide this area with an abundance of natural light and ducted air conditioning and heating throughout ensures your comfort no matter the season. The large 14sqm (approx) balcony is accessed via sliding doors and with enough space for an outdoor set up, it is the perfect place to take in the Melbourne sunset.

[For full version visit the website](#)

<https://www.bradyresidential.com.au>



APPROX TOTAL AREA : 90SQM

1103 / 28 WILLS STREET, MELBOURNE

**BRADY** residential

Please note: All stated dimensions are approximate only. Particulars given are for general information only and do not constitute any representation on the part of the vendor and agent.