



3509/500 Elizabeth Street MELBOURNE VIC

1  1 

This one bedroom apartment is your ideal city property, with Queen Victoria Market just across the road, Melbourne Central Shopping Centre, RMIT and Melbourne UNI just minutes away, the location is second to none.

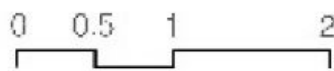
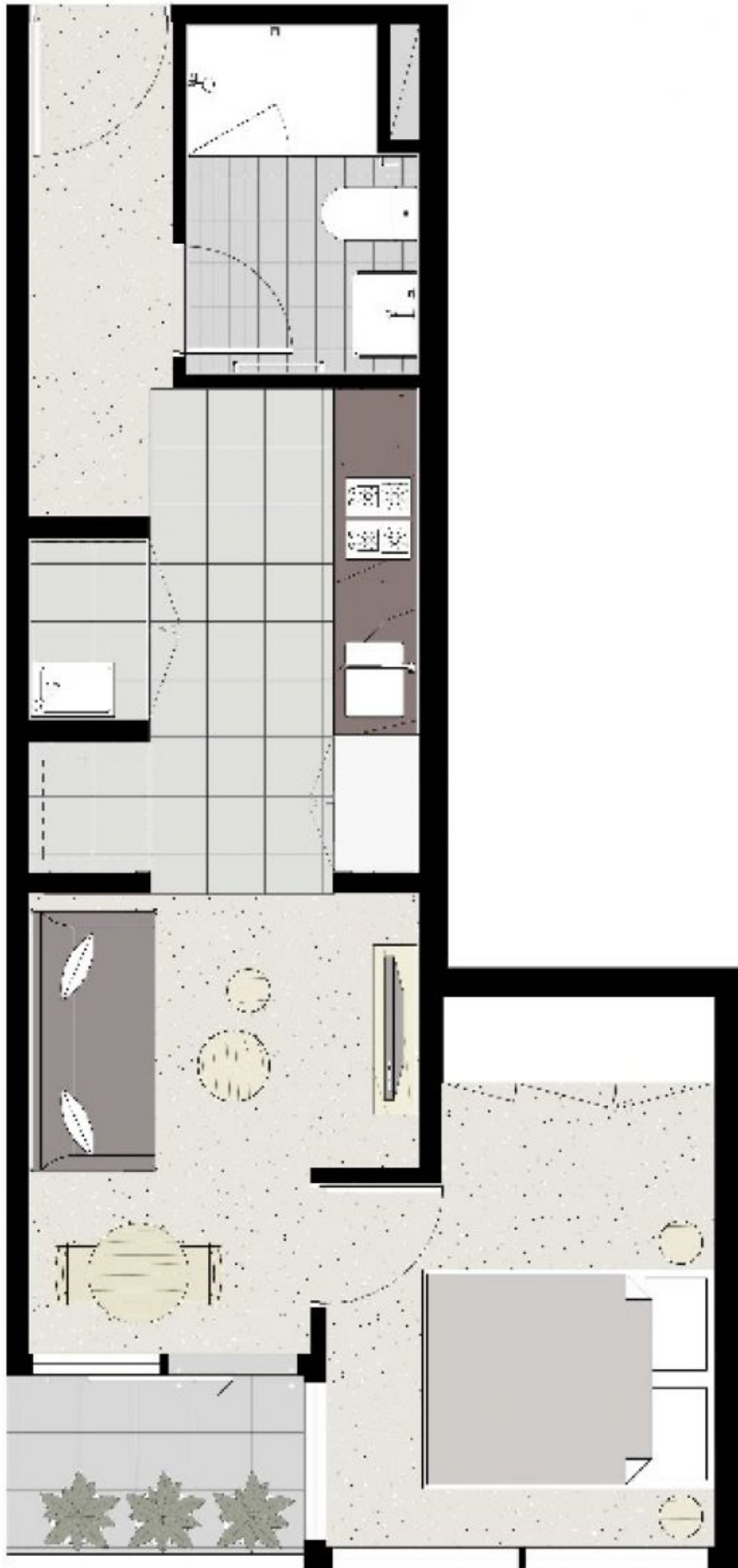
Type : Apartment

View : <https://www.bradyresidential.com.au/sale/vic/inner-city/melbourne/residential/apartment/7415957>

As you would expect, the fittings and fixtures throughout are of the highest standard, and include quality high-end appliances in your kitchen, bespoke Corian basins in your bathroom and double-glazing on all windows to keep the hum of the city out, and your peace and quiet in. Your residence is also equipped with its own NBN link for super-fast internet speeds.

Vision Apartments also features state of the art, resort style facilities with an emphasis on resident's health and

[For full version visit the website](#)



BRADY

This information is for marketing purposes only and is subject to variations permitted in the contract of sale.