



1224/422 Collins Street MELBOURNE VIC

2 2 1

This extraordinary and rarely available, double-story penthouse is located in the coveted art deco and heritage-listed 'Temple Court', Collins Street. Originally constructed in 1924 as an office building in the Palazzo style, it is a substantial and impressively detailed example of the classical revival in modern architecture, in Melbourne during the 1920s.

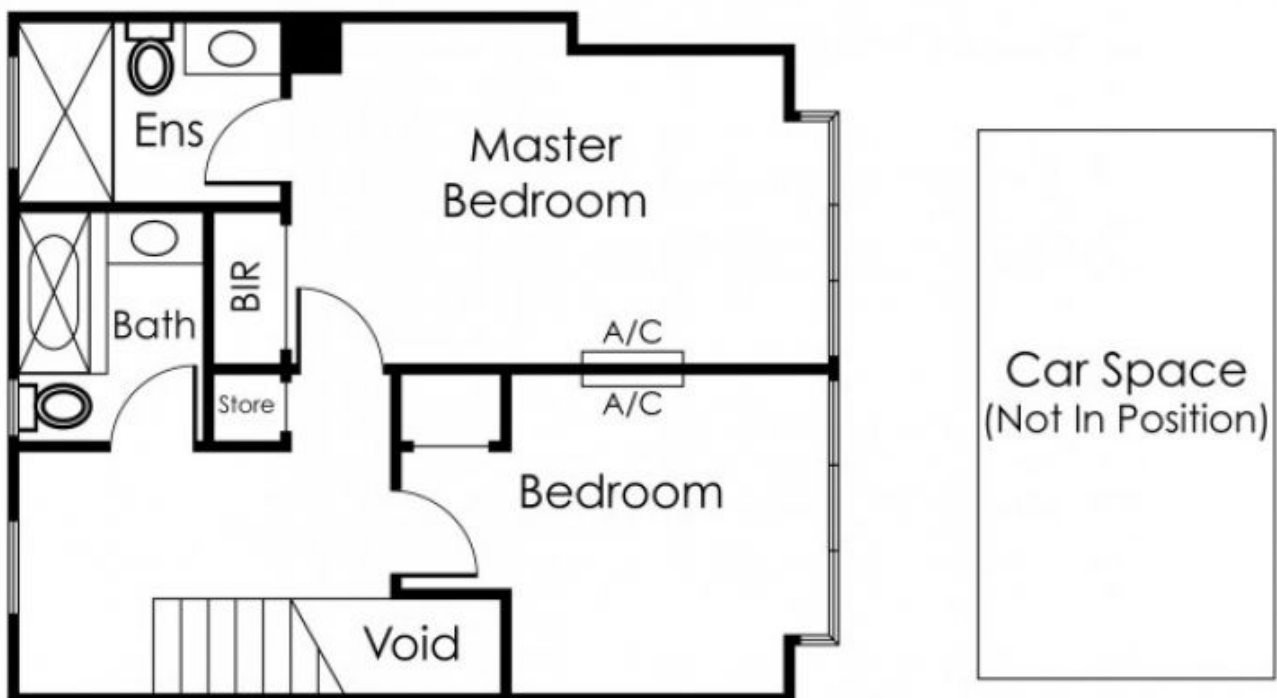
Type : Apartment

View : <https://www.bradyresidential.com.au/sale/vic/inner-city/melbourne/residential/apartment/7415850>

Converted into a luxury apartment edifice in 2001, this architecturally significant building still houses the mural, known as 'The Eight Aboriginal Tribal Headmen', which was created in 1963 by major Australian artist, Mervyn Napier housed in the lobby area - a wonderful extravagance for residents and guests alike! This

[For full version visit the website](#)

1224/422 Collins Street, Melbourne



Not to Scale

Every care has been taken to verify the accuracy of details in this brochure. Prospective purchasers are requested to take such action as is necessary to satisfy themselves of any pertinent matters.