



**2106/280 Little Lonsdale Street MELBOURNE VIC**

**3**  **2**  **1** 

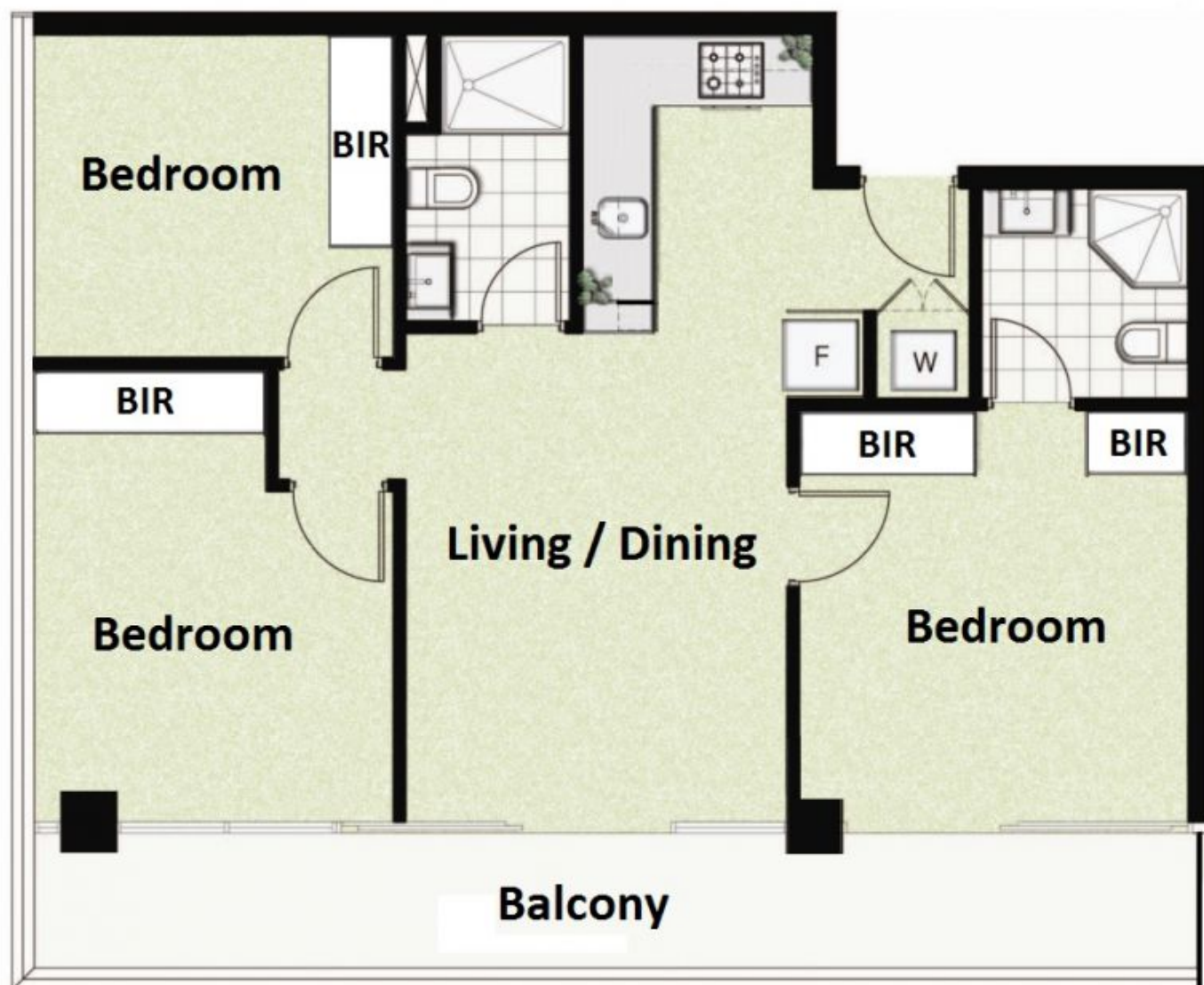
Enjoy huge stamp duty saving with this BRAND NEW north facing 3 bedroom apartment with one secure car space located in the heart of Melbourne's CBD. Featuring 270 degree views of the city including Melbourne Centrals famous shot tower, Southbank and Eureka Tower. The setting is ideally located in the centre of Little Lonsdale Street, right next to Melbourne Central and just a stone's throw from universities, State Library, Queen Victoria market, this apartment offers an unrivalled lifestyle that will be the envy of many.

The open plan living and dining area is exceptionally planned to accommodate an expansive lounge and dining set up, perfect for entertainers with the space to furnish to your heart's desire. The full length windows flood the area

**Type** : Apartment

**View** : <https://www.bradyresidential.com.au/sale/vic/inner-city/melbourne/residential/apartment/7415761>

[For full version visit the website](https://www.bradyresidential.com.au)



**Car Space not  
in position**